



Bandhan
IGNITING POTENTIAL

TRANSFORMING LIVES THROUGH FINANCIAL INCLUSION & LIVELIHOOD SUPPORT

THP BFSL-9 Impact Snapshot
(2025-2026)

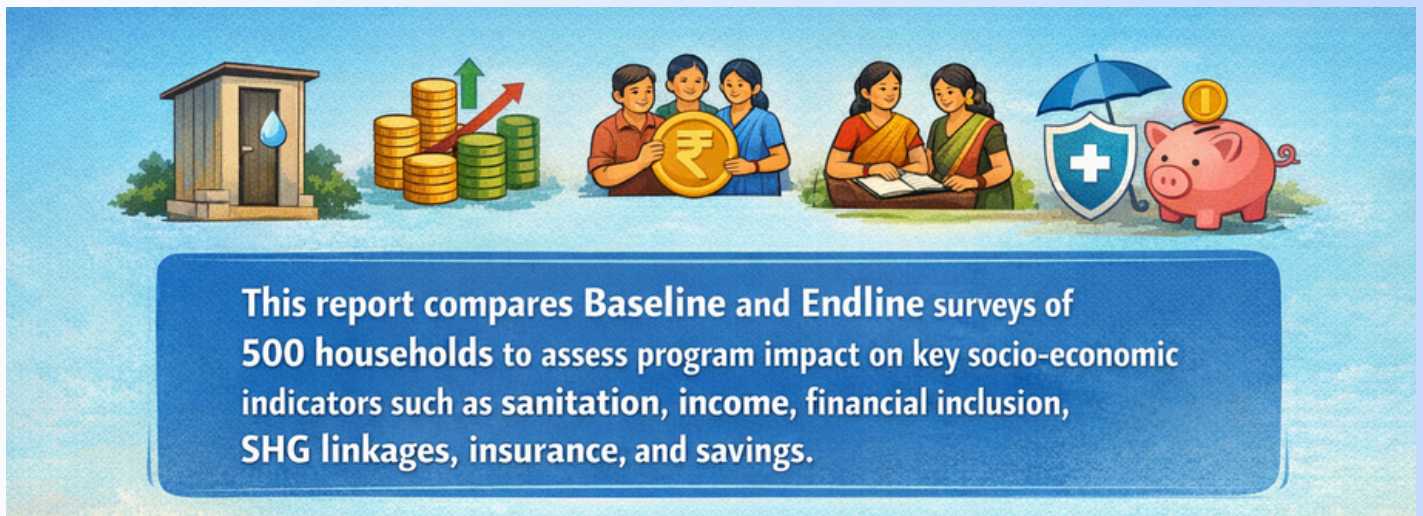


Why This Matters ?

Rural households often face interconnected challenges—low income, limited savings, lack of access to financial systems, and inadequate social protection. The THP BFSL-9 initiative was designed to address these gaps holistically, enabling families to move toward economic security, dignity, and resilience.

Our Approach :

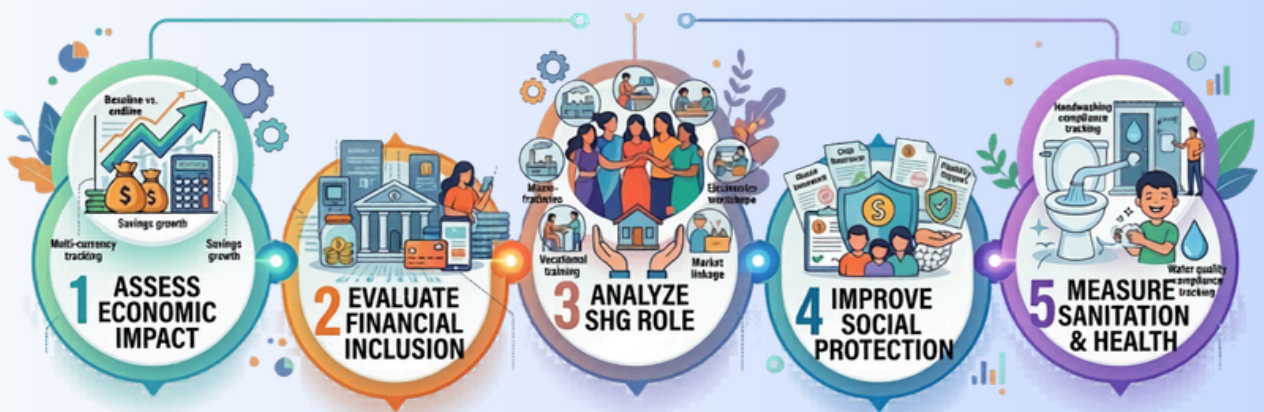
- Livelihood enhancement
- Financial inclusion support
- Self-Help Group (SHG) strengthening
- Access to insurance & social protection
- Sanitation awareness and behaviour change



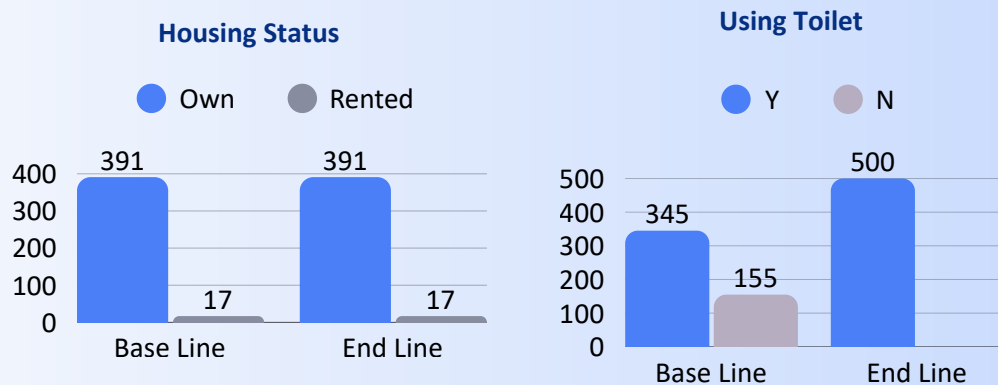
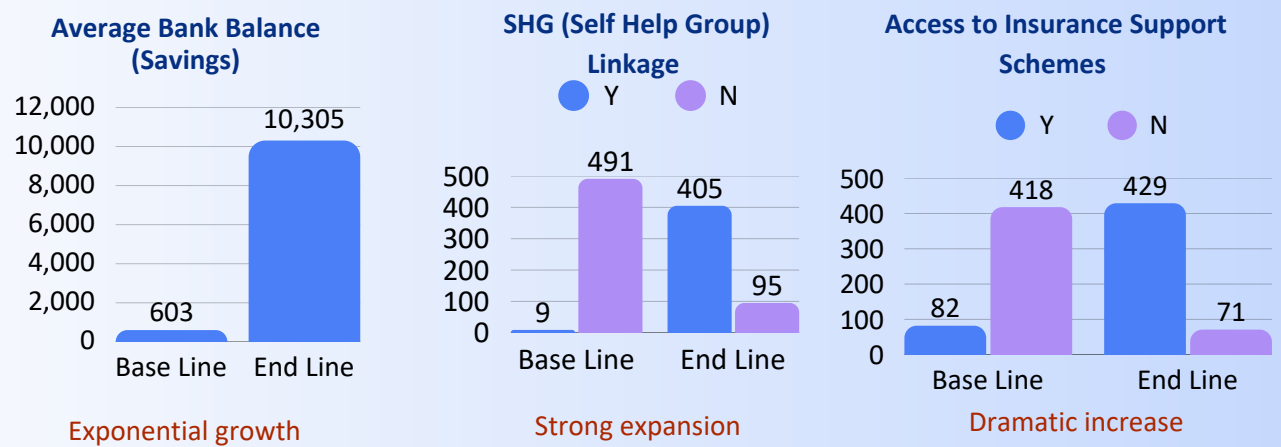
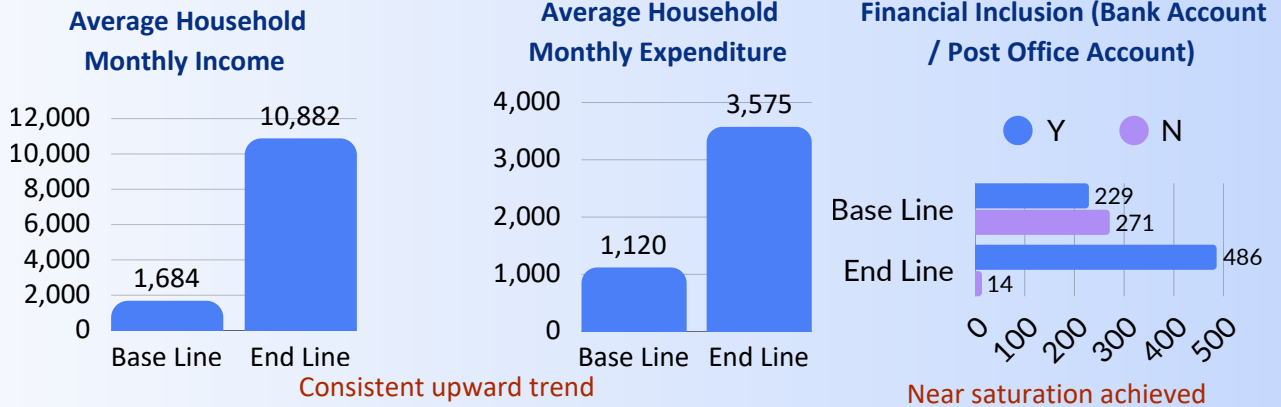
MAJOR RESEARCH QUESTIONS :

- How did livelihood interventions influence changes in household income and expenditure between the baseline and endline surveys?
- How did the intervention contribute to financial inclusion, including access to bank/post office accounts and increased household savings?
- What role did Self-Help Groups (SHGs) play in strengthening household economic security and institutional linkages?
- How did awareness and facilitation efforts improve access to insurance and social protection schemes among households?
- To what extent did the project improve sanitation practices and toilet usage among beneficiary households?

RESEARCH OBJECTIVES



IMPACT AT A GLANCE



Improved adoption and usage

What Changed for Communities

Before the intervention:

- Limited or no access to formal banking
- Low and unstable incomes
- Minimal savings
- High vulnerability to shocks



After the intervention:

- Financially included households
- Increased income and resilience
- Strong savings behavior
- Access to safety nets and institutional support